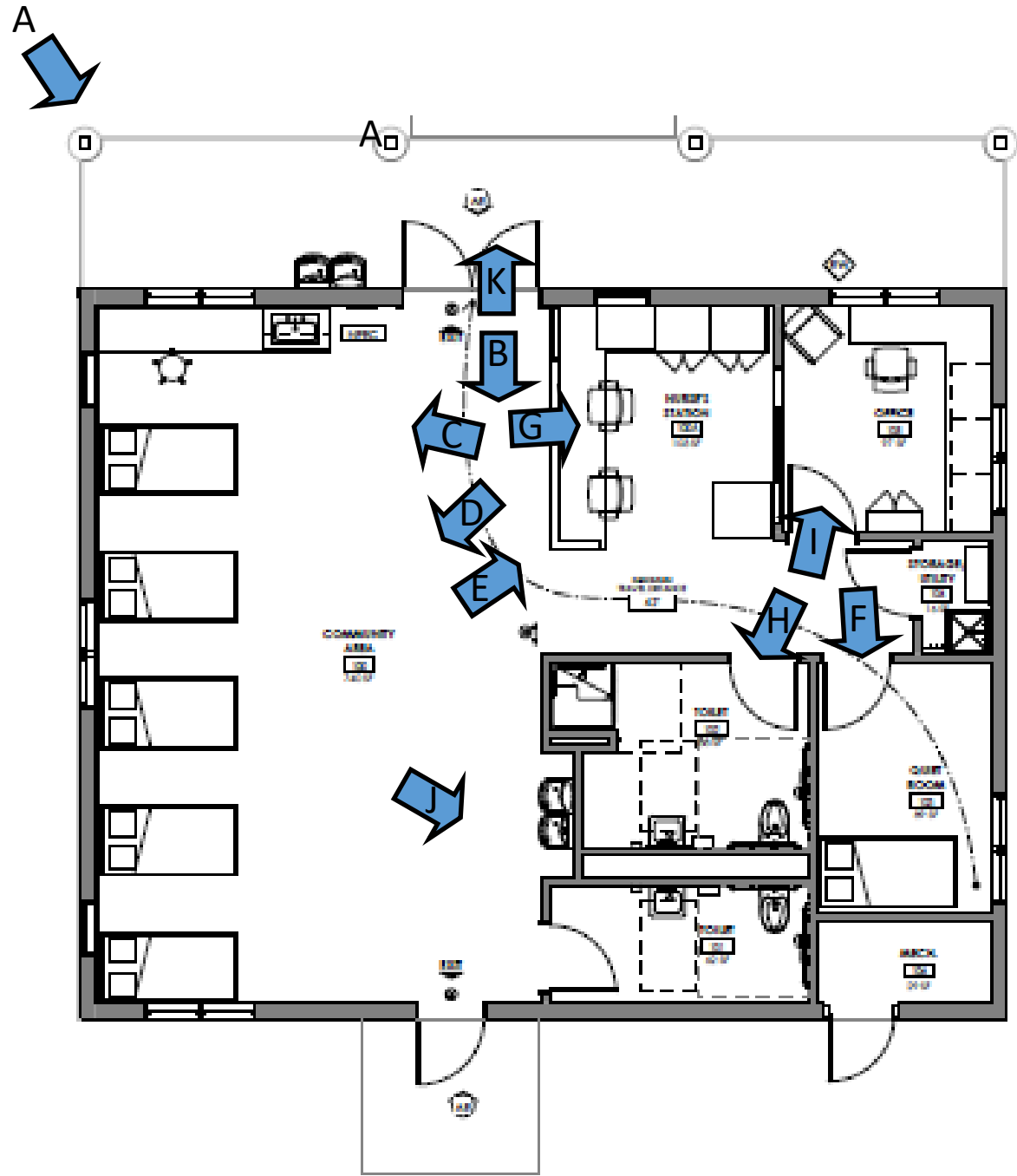


Camp Stella Maris Health Center

Built 2019

- ♦ 1300 sqft
- ♦ Built on grade—concrete slab
- ♦ # of campers and staff each week = 450



View A

Front Elevation



View B

Through Front Door



View C

Triage Area



View D

Sick Beds



View E

Nurses Station



View F

Isolation Room



View G

Nurses Station into
Office



View H

Restroom with
Shower



View I
Office



View J

Drinking Fountain
and 2nd Restroom



View K

Out Front Doors on
to Camp

